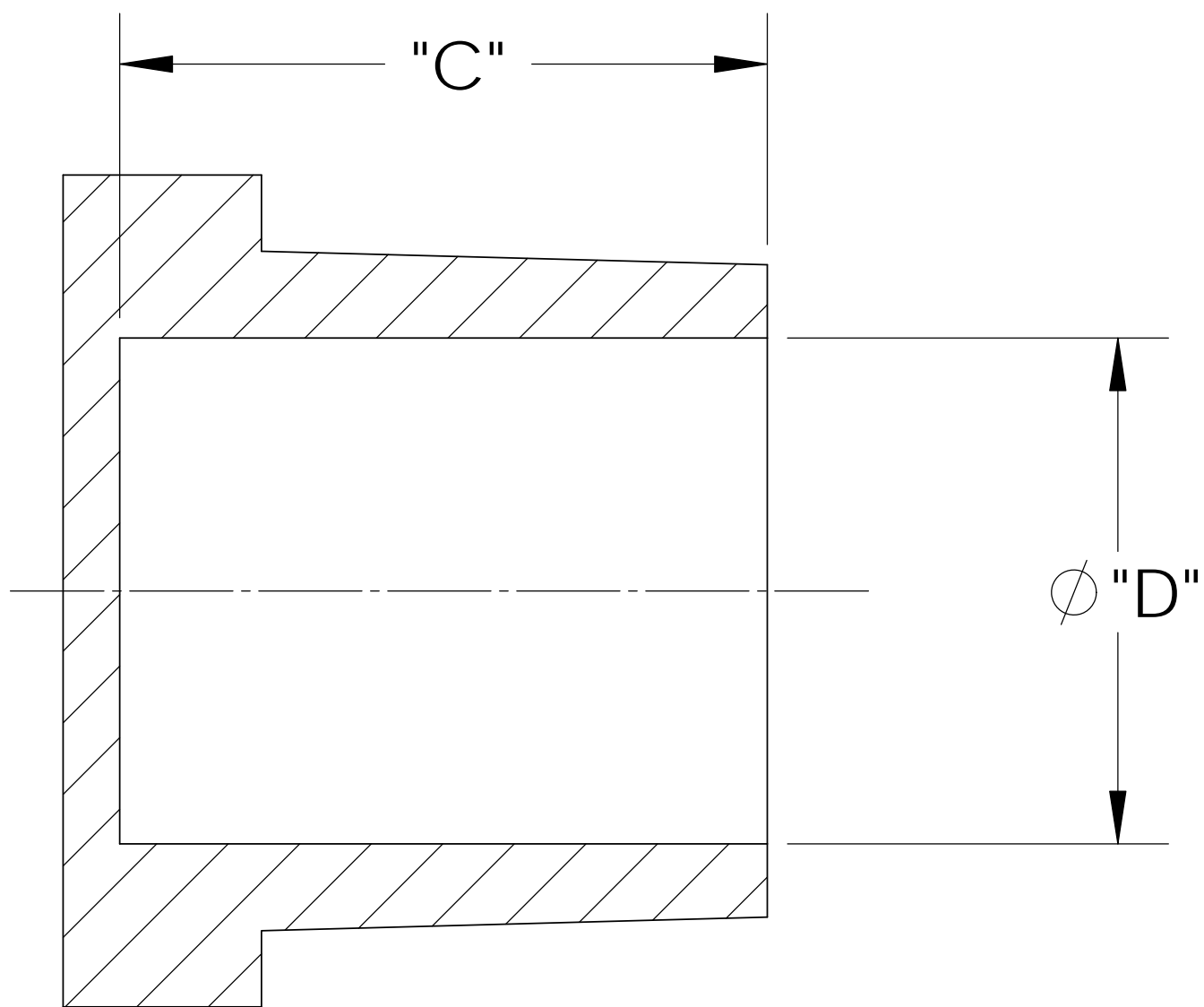
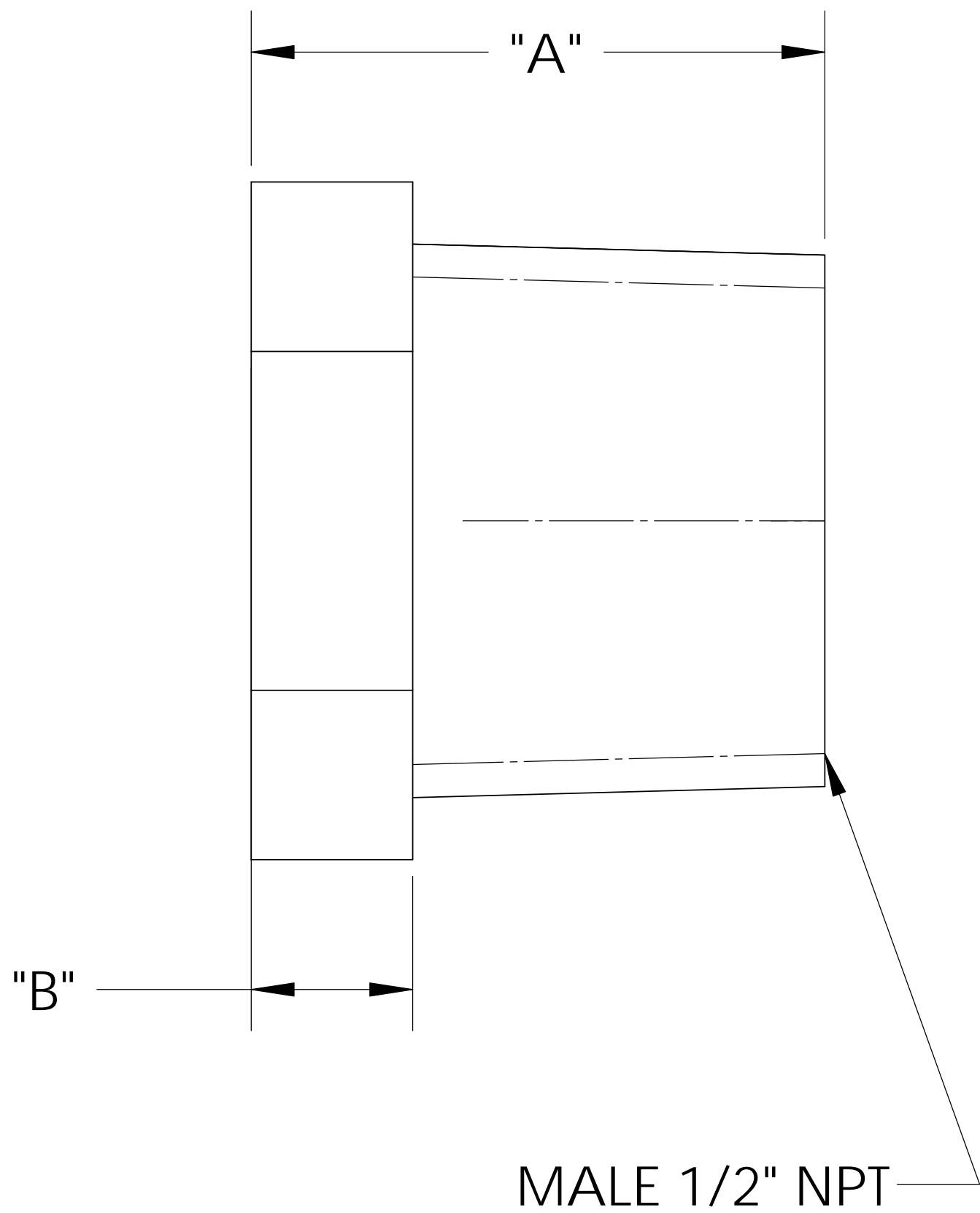
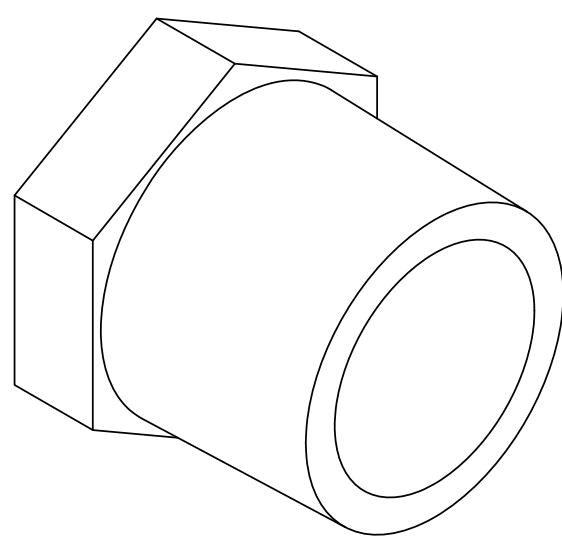
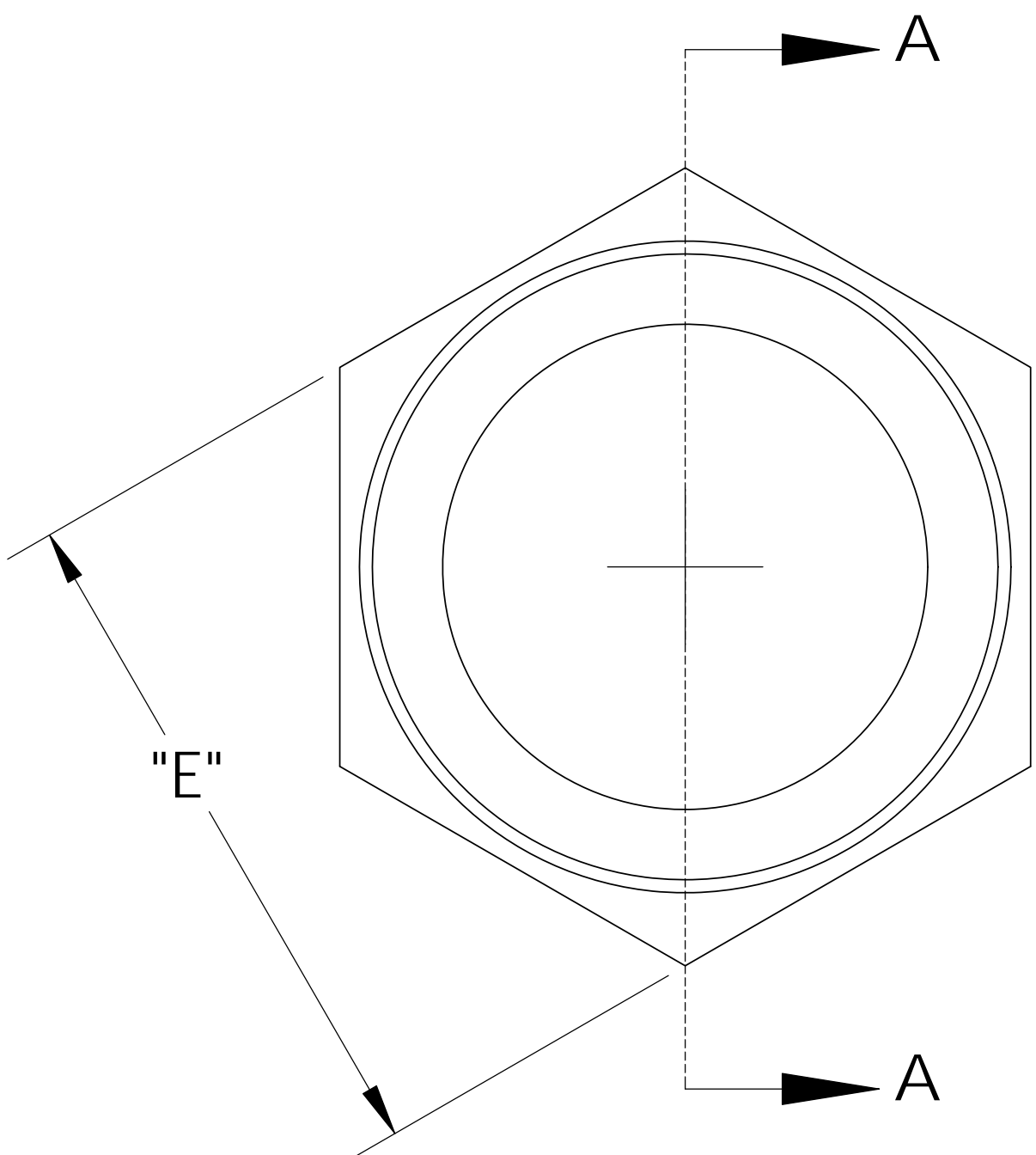


UNCONTROLLED IF PRINTED; CONTROLLED DOCUMENT LOCATED IN IQMS DOCUMENT CONTROL

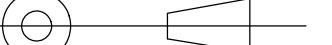



SECTION A-A



CATALOG NO.	DESCRIPTION	MATERIAL	DIM "A"	DIM "B"	DIM "C"	DIM "D"	DIM "E"
TP4008/PP	1/2" NPT PP	POLYPROPYLENE	.860	.255	.79	.615	.88
TP4008/P	1/2" NPT P	POLYETHYLENE	.850	.255	.78	.610	.87
TP4008/N	1/2" NPT N	NYLON	.870	.245	.80	.625	.89

SHOWN

D	95.00025	CONVERTED TO 3D FORMAT	UNLESS OTHERWISE SPECIFIED: DIMENSIONS ARE IN INCHES TOLERANCES: ANGULAR: ±0.5° X.X = ± 0.1 X.XX = ± 0.05 X.XXX = ± 0.015 REMOVE ALL SHARP EDGES AND BURRS BLEND ALL RADII TO 0.01IN INTERPRET GEOMETRIC TOLERANCING PER: ANSI Y 14.5 1994 MATERIAL: PP, P, N FINISH: NA THIRD ANGLE PROJECTION: 	DRAWN	KDJ	10/08/10	<div> Thogus You think it, we can make it... 33490 PIN OAK, AVON LAKE, OH 44012 TITLE: PLUG, 1/2" NPT</div>		
				CHECKED	KDJ	10/8/10			
				ENG APPR.		XX/XX/XX			
				MFG APPR.		XX/XX/XX			
				Q.A.		XX/XX/XX			
				COMMENTS:					
REV	WRO#	DESCRIPTION		DO NOT SCALE DRAWING			SIZE B	DWG. NO. TP4008	REV C
HISTORY							SCALE: 2:1	MASS:	SHEET 1 OF 1

PROPRIETARY AND CONFIDENTIAL
THE INFORMATION CONTAINED IN THIS
DRAWING IS THE SOLE PROPERTY OF
THOGUS PRODUCTS COMPANY. ANY
REPRODUCTION IN PART OR AS A WHOLE
WITHOUT THE WRITTEN PERMISSION OF
THOGUS PRODUCTS COMPANY IS
PROHIBITED.

NOTES:

- 1) POLYPROPYLENE HAS COLOR OPTIONS:
BLACK = TP4008/PPB
NATURAL = TP4008/PPN